



**2023 Bone Stock  
Rules**

## **DRIVER ELIGIBILITY**

Minimum qualification: Drivers must be 15 years or older before competing in the **BONE STOCK DIVISION**, unless prior parental consent forms are submitted and approved from Sunset Speedway.

## **GENERAL VEHICLE ELIGIBILITY**

Vehicle is open to any “compact” make or model front wheel drive 4-cylinder production car with the following notes: Front wheel drive only. No rear wheel or four-wheel drive vehicles. No turbos/supercharges. VTEC Engines – will be allowed with 50lb weight penalty to the right side of the car passenger seat area. VTEC must be disabled. No V6 Cars allowed. Ride height rule of 5” with driver in car. These cars will be **COMPLETELY** Stock. They are not full race cars or speed machines. Just because an item isn’t addressed in the rule book doesn’t mean that it is legal.

## **SAFETY EQUIPMENT**

All safety equipment must be inspected and approved by Speedway officials prior to the vehicle going on the racetrack. Safety specs for Bone Stock 4 Cylinder Cars may differ to standards at other tracks because of the speedway sizes. Belts: Five-point safety belts and shoulder harnesses are mandatory. Belts must have been manufactured in the last 5 years and carry an SFI rating. The speedway strongly recommends belts be within 3 years of manufacture date. Seatbelts must be in good repair with no visual damage (i.e., cuts, oil stains, sun damage etc.) Helmets: Full face Snell SA 2010 or greater. SA (Special Applications) rated helmets differ from normal helmets as they are rated for multi-impact and are fire retardant. Speedway will work with existing competitors on finding affordable sources for Snell SA rated helmets. HAANS device is highly recommended.

## **FIRE SUIT:**

Minimum SFI 1 rated Nomex or Proban single-layer or greater fire suits are mandatory.

## **GLOVES & FOOTWEAR:**

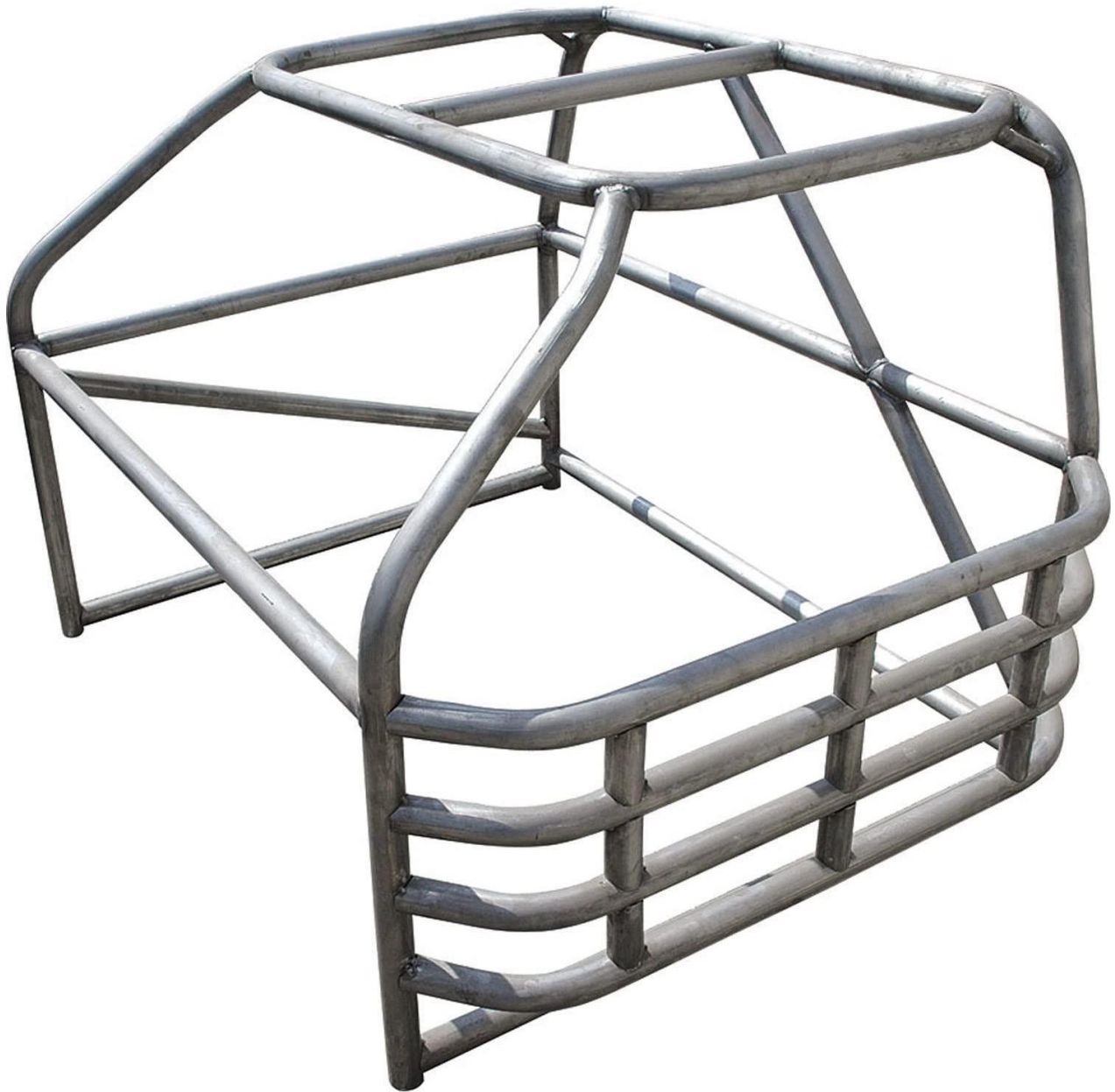
Fire retardant gloves are mandatory. Leather shoes or boots or fire-retardant race shoe is mandatory. No nylon sneakers.

## **WINDOW NET:**

Driver’s side window net is mandatory.

## **ROLL CAGE:**

Car must have full roll hoop mounted securely to the floor behind the driver’s seat with a cross brace from side to side, interior door bars are mandatory on both drivers and passengers’ side. Complete four-point roll cage is mandatory. Front hoop permitted. All interior door bars must be padded where the driver may come in contact with them. Inner door panels are recommended to be removed to accommodate space for door bars. Minimum size of tubing or pipe allowed is 1½ outer diameter, 0.095 thickness minimum. 1¾ outer diameter tube is highly recommended. Water pipe is not permitted. The entire roll cage must be securely welded together.



### **MECHANICAL RULES**

All cars must be “stock” year, make and model with no modifications. This includes all engine components, drive train, suspension, and cooling system – cooling system must use water **ABSOLUTELY NO ANTIFREEZE**. GM is GM, Ford is Ford, Dodge is Dodge, Toyota is Toyota and so on.

Engine modifications, and or factory equipped power adders: Example: A Honda/Acura B17C1 DOHC 1.7 L VTEC. Another example would be the Mitsubishi’s MIVEC system. Ford Fiesta VTEC are not allowed to have the VTEH solenoids enabled. VVT allowed. Air intake must be located under the hood. No cold air intake kits. Engine must be completely stock. Clutch and drive train must be completely stock. Engine computer **MUST** have factory settings. Fabricated air box allowed. Must remain boxed in with 1 side open. Cannot be placed behind a headlight or act as a ram air intake. Must be approved by technical inspector.

### **AIR BAGS:**

Both passenger and driver's side airbags must be removed. **NOTE: USE CAUTION WHEN REMOVING AIR BAGS.**

### **BODY & APPEARANCE:**

No "gutting" of interior panels. Must have full inner door panels, etc. Inner door panels may only be removed to provide clearance for roll bars. Stock hood and truck bracing. Hood scoops OK. No holes cut in the hood and rear spoilers allowed. Stock hood/trunk latch must be removed. Hood/trunk must be fastened using a Quick hold down release for fast hood/trunk entry must be devised for emergency access to trunk. Stock bumpers in stock location.

All side windows and rear windows must be removed. May replace with Lexan. If stock windshield is to be used, center bar must be installed in windshield opening. Minimum 1" x 1/8" flat stock mounted between the dash bars and the upper halo bar of the roll cage. Alternately, competitors may use Lexan window or a screen with minimum of two interior support beams (no plastic) no more than 1" wide and 1" deep to follow contour of inside windshield are mandatory.

### **RUB RAILS:**

External metal rub rails are PERMITTED. Plastic /clear rub rails are permitted.

### **REINFORCEMENT BARS:**

Manufacturers crumple zones must be kept intact. Crossbars between strut towers (front and rear) will be kept intact. Crossbars between strut towers (front and rear) will be permitted no larger than 1" steel tubing welded or bolted securely. All doors must be welded or bolted. Sunroof cars must be covered with minimum 22-gauge sheet metal. No sheet metal screws, or aluminum nailed rivets.

### **PLASTIC/GLASS COMPONENTS:**

Stock bumper covers should remain in place; fiberglass or two-piece plastic noses are allowed. All stock headlights and taillights must be removed.

### **DASH, SEAT AND UPHOLSTERY:**

Stock dash may remain in place. Carpet and additional stock seats must be removed. Driver's seat, NO stock driver's seats. Stock seat to be replaced with proper approved racing seat securely attached to roll cage. The tech committee may reject cars that are considered improperly prepared.

### **BRAKE SYSTEM:**

ABS/traction control system must be disconnected at module. ABS/traction control systems must be disabled. All four-wheel brake assemblies must function correctly. Stock type rotors only.

## **SUSPENSION/STEERING:**

**MUST BE COMPLETELY STOCK.** No bump stops. All suspension components must be stock and same on both sides of the car. Same sway bar link length, same coil spring diameter/length side to side, but front to back doesn't matter. Camber & Castor, no grinding or enlarging stock holes adjustments +/- 3 degree maximum. **RF wheel 2" maximum** No bending or altering steering knuckles, control arms, coil springs, strut mounts, etc. If suspension/steering components are damaged or bent during race it must be repaired prior to next race day event. No racing/lowering/performance springs, one spring rubber will be allowed on each corner of car only.

## **BATTERY:**

**MUST BE SECURELY FASTENED.** (If mounted in the interior of the car, battery must be fastened securely to the floor behind driver's seat). Battery must be covered. Cover must be fastened independent of the battery hold down. **REMEMBER – Batteries are heavy and full of acid. In the event of an accident, insecure batteries could severely injure.**

## **EXHAUST SYSTEM:**

No Headers! 1¾" maximum exhaust system. Catalytic converters may be removed. Exhaust must exit out the side or rear of car. Cars must run stock-type mufflers. No straight – thru mufflers.

## **FUEL SYSTEM:**

Stock tank may be used in stock location. Additional shielding must be installed under the tank. Small fuel cell in trunk is recommended. If used parcel shelf and panel behind rear seat back rest to be completely sealed with minimum 22-gauge steel and an in-line fuel pump can be used. Mounted in trunk area only. No plastic fuel filters. All fuel lines must be securely mounted under the car. Stock steel fuel tanks - Fuel pump must be mounted inside steel fuel tank. All cars and OE Fuel Injected cars must have fuel pump shut-off switch mounted on the roof above the driver. The switch must be a "push/pull" type switch and must be clearly labeled.

## **RADIATOR:**

Any rad that will fit within the stock rad cradle is allowed. **Water only. No Anti-freeze. No aftermarket or aluminum rads allowed.**

## **TIRES/WHEELS:**

All tires/wheels must be the same size diameter (Example: All 4 tires/wheels 14" 15" 16") All tires must be 55 series or higher (Example: p185/55/14) Must be 400 or more thread wear rating. Minimum tire tread depth applies – tread must be above wear indicator. All tires must be standard passenger car street type tires. Must be DOT approved. No shaved or treated tire will be permitted. Purchasing of new tires is not encouraged and may result in a vehicle being designated as "overly competitive" and starting the event with a penalty. All tires are subject to approval of official in charge.

**RADIOS:**

No two-way racing radios allowed.

Must have 1-way radio programmed to 454.000 for scoring communication

**Weights:**

Minimum weight with driver after race. Cars with

Under 100 hp 2000lbs

101-110 hp 2100lbs

111-120 hp 2200lbs

121-130 hp 2300lbs

131-140 hp 2400lbs

141-150 hp 2500lbs

151-160hp 2600lbs

161hp or more 2700lbs minimum weight.

Horsepower as per manufacturer's specifications.

**Sunset Speedway has the right to add weight and make adjustments at any time to any car to keep competition as equal as possible.**

**NOTE: IF IT DOESN'T SPECIFICALLY SAY YOU CAN DO IT, ASK THE TECH DIRECTOR FIRST**

Interpretation of these rules will be solely up to the judgment of the officials in charge of the area in question. Sunset Speedway reserves the right to impound non-complying components with no compensation to the owner(s) Noncompliance with the specifications outlines herein may subject violating teams to disqualification, loss of points and moneys and or fine.

ALL DECISIONS BY PIT STEWARDS, CHIEF TECHNICAL INSPECTOR OR SPEEDWAY EXECUTIVE COMMITTEE MEMBERS WILL BE FINAL. ALL RULES ARE SUBJECT TO INTERPRETATION BY SUNSET SPEEDWAY OFFICIALS. RULE BOOKS WILL BE ISSUED TO ALL MEMBERS. ALL EQUIPMENT NOT GOVERNED BY THE AFOREMENTIONED RULES ARE TO BE SUBMITTED TO SPEEDWAY NOT LESS THAN 30 DAYS PRIOR TO THE DATE OF INTENDED USAGE. NO EQUIPMENT WILL BE CONSIDERED APPROVED BY REASON ON HAVING PASSED THROUGH INSPECTION UNOBSERVED. RULES APPLY TO ALL RACE EVENTS.

**TECH OFFICIAL**

**Ben Dennis**

**905-806-7811**

**ben@exylemobile.ca**

**TRACK OWNER/OPERATOR**

**Brian Todish**

**416-543-3684**

**[brian@sunsetsspeedway.ca](mailto:brian@sunsetsspeedway.ca)**